

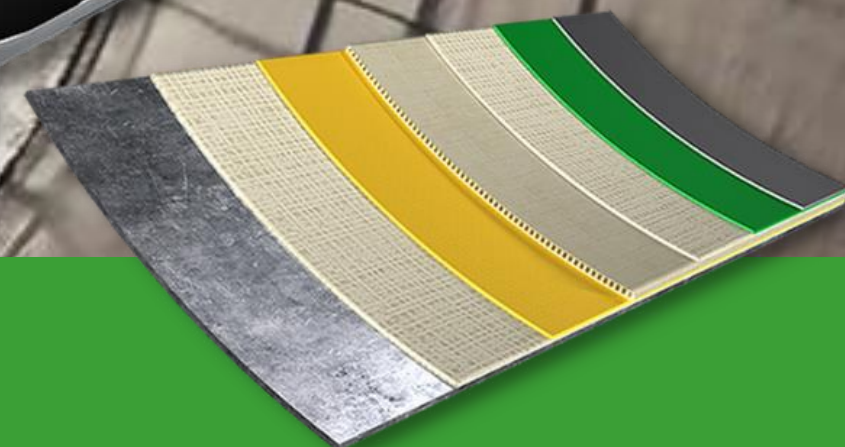


DON WOOD Inc.

www.donwoodinc.com

IN - SITU DOUBLE WALL FIBERGLASS TANK CONSTRUCTION

FDEP EQ# -
979



EXCLUSIVELY INSTALLED BY DON WOOD INC

2024



TABLE OF CONTENT

↘ INTRODUCTION TO RAFIBRAS
DOUBLE WALL SYSTEM

↘ BENEFITS OF THE
RAFIBRAS SYSTEM

↘ STEP-BY-STEP
INSTALLATION PROCESS

↘ WHY CHOOSE DON WOOD INC.?

↘ THE DON WOOD INC.
DIFFERENCE

↘ TESTIMONIALS

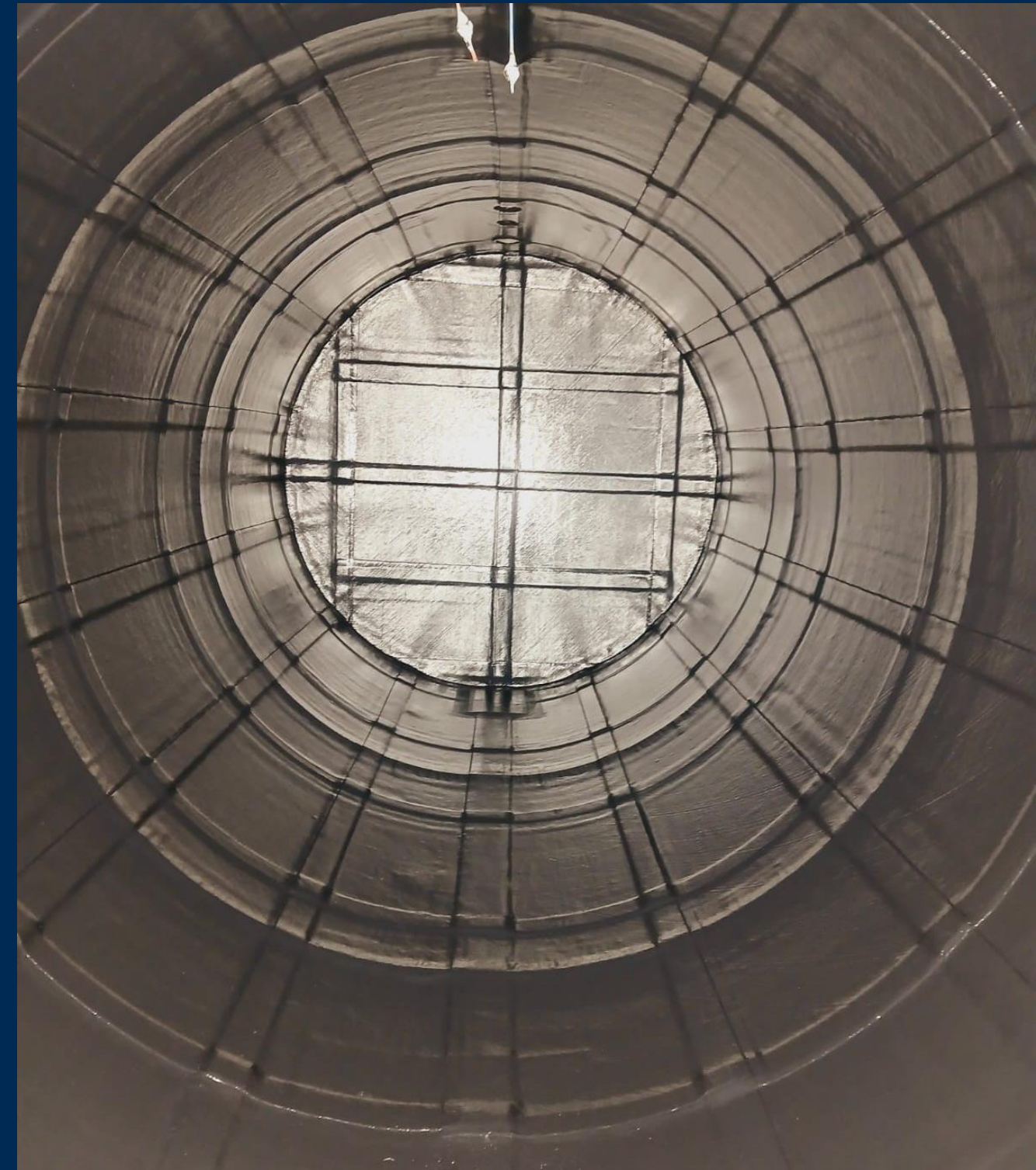
↘ CONTACT INFO/NEXT STEPS



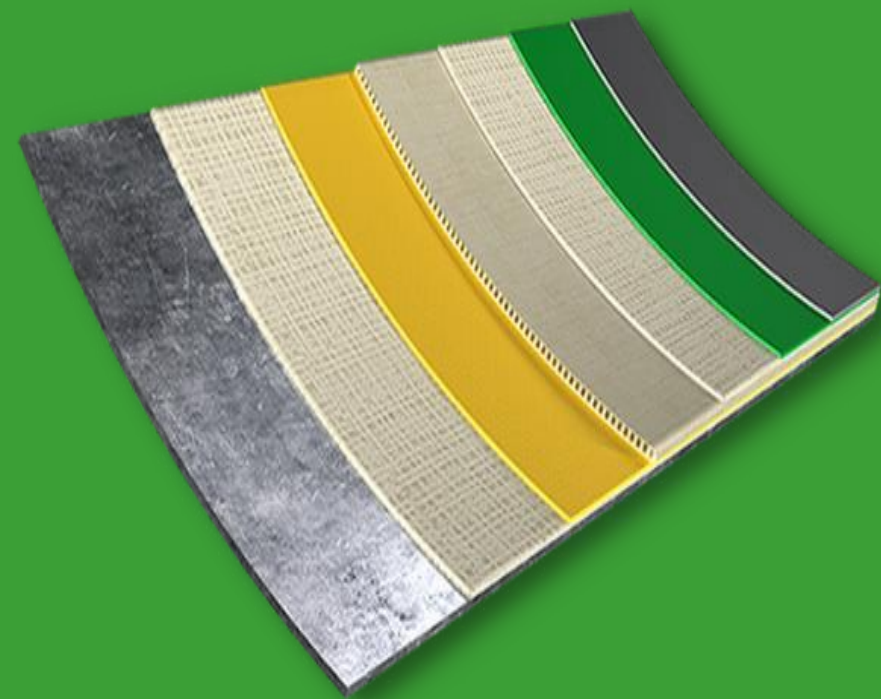
Unmatched Tank Protection

- Cutting-edge double wall protection for underground fuel tanks
- Complies with global environmental safety standards
- 100% fiberglass construction ensures high durability and corrosion resistance
- Multi-layer protection with interstitial monitoring for leak detection
- Suitable for above and underground tanks

**RAFIBRAS DOUBLE
WALL SYSTEM**



DON WOOD INC.



KEY BENEFITS OF THE RAFIBRAS DOUBLE WALL SYSTEM



- Advanced multi-layer fiberglass protection
- Long-term leak protection with a 3D interstitial space
- Electronic monitoring system ensures early leak detection
- Reduces environmental risks and maintains regulatory compliance



STEP-BY-STEP INSTALLATION PROCESS

1. MOBILIZATION & SAFETY SETUP

Secure facility for uninterrupted operations during tank upgrade.



2.DEGASIFICATION

Purge vapors from the tank for a safe working environment.



ECO-FILTER removes fuel vapors before clean air is released into the environment

3.EQUIPMENT REMOVAL

Remove old pumps and equipment in the tank sump.



4. TANK CLEANING & EVALUATION

Thorough cleaning and evaluation to prepare for installation.



5.SURFACE PREPARATION

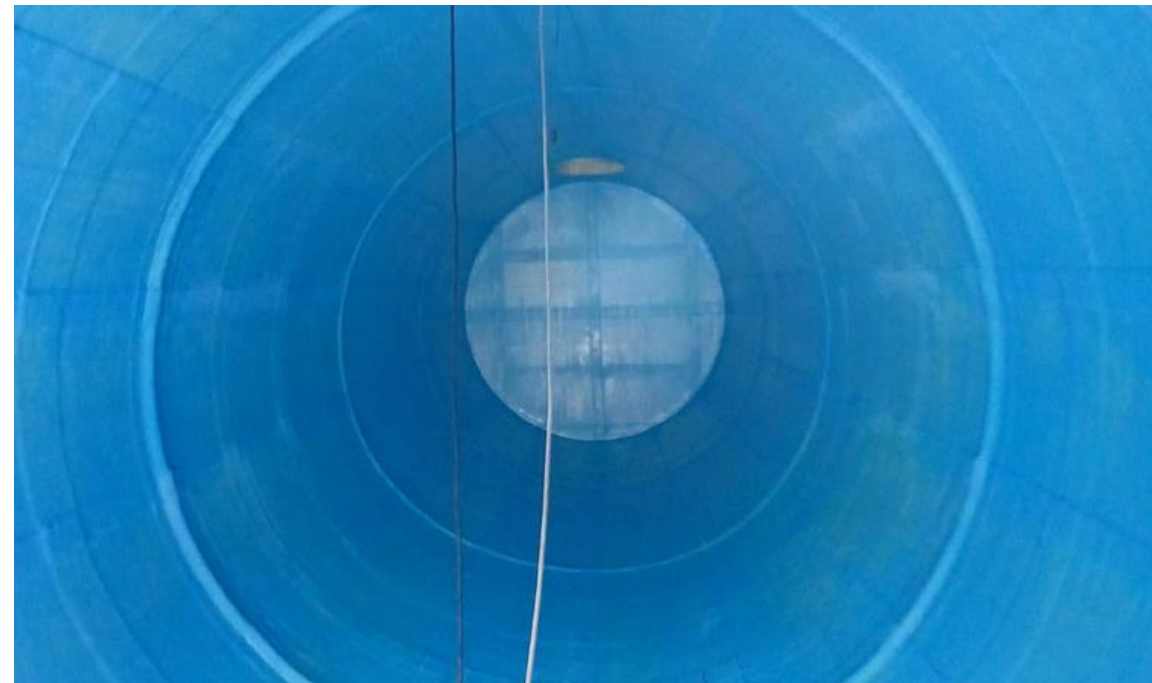
Repair and prepare the tank surface including adhesion tests





6. LAYER 1 – YELLOW

First layer of protection installed.



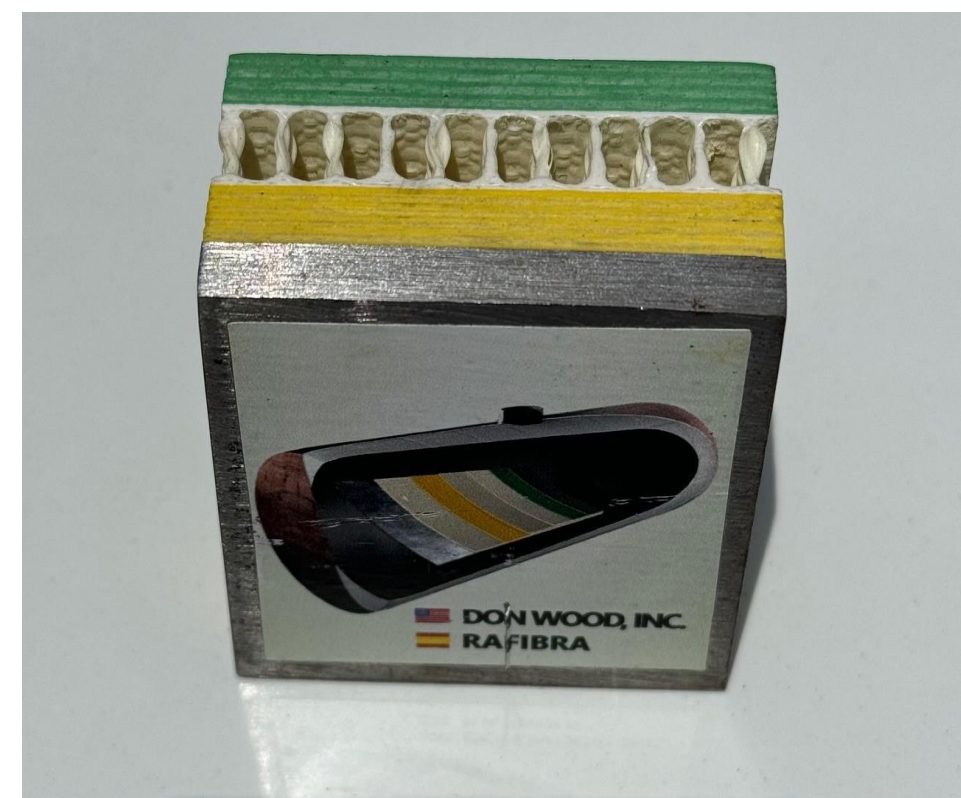
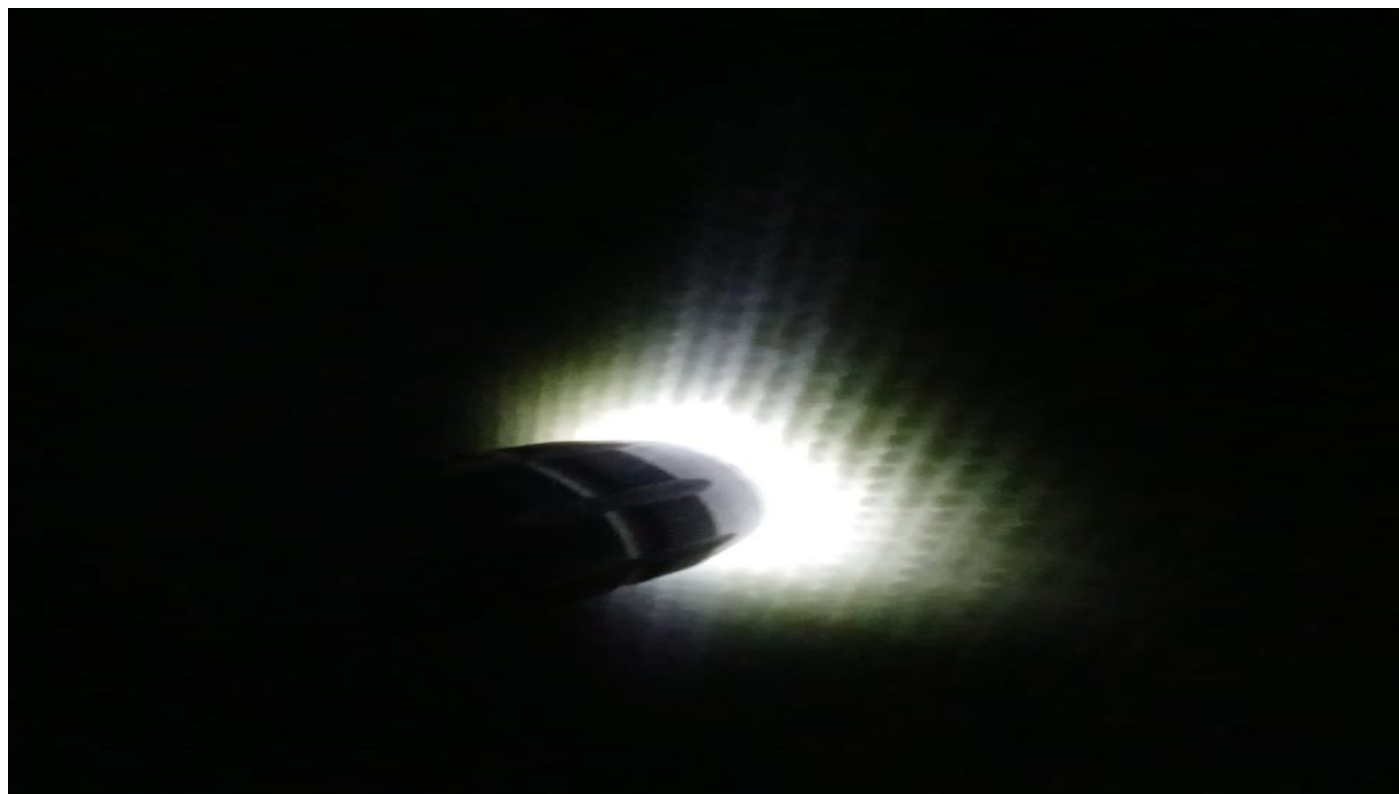
7. LAYER 2 – BLUE

Second protective layer applied.

8. INTERSTITIAL SPACE INSTALLATION



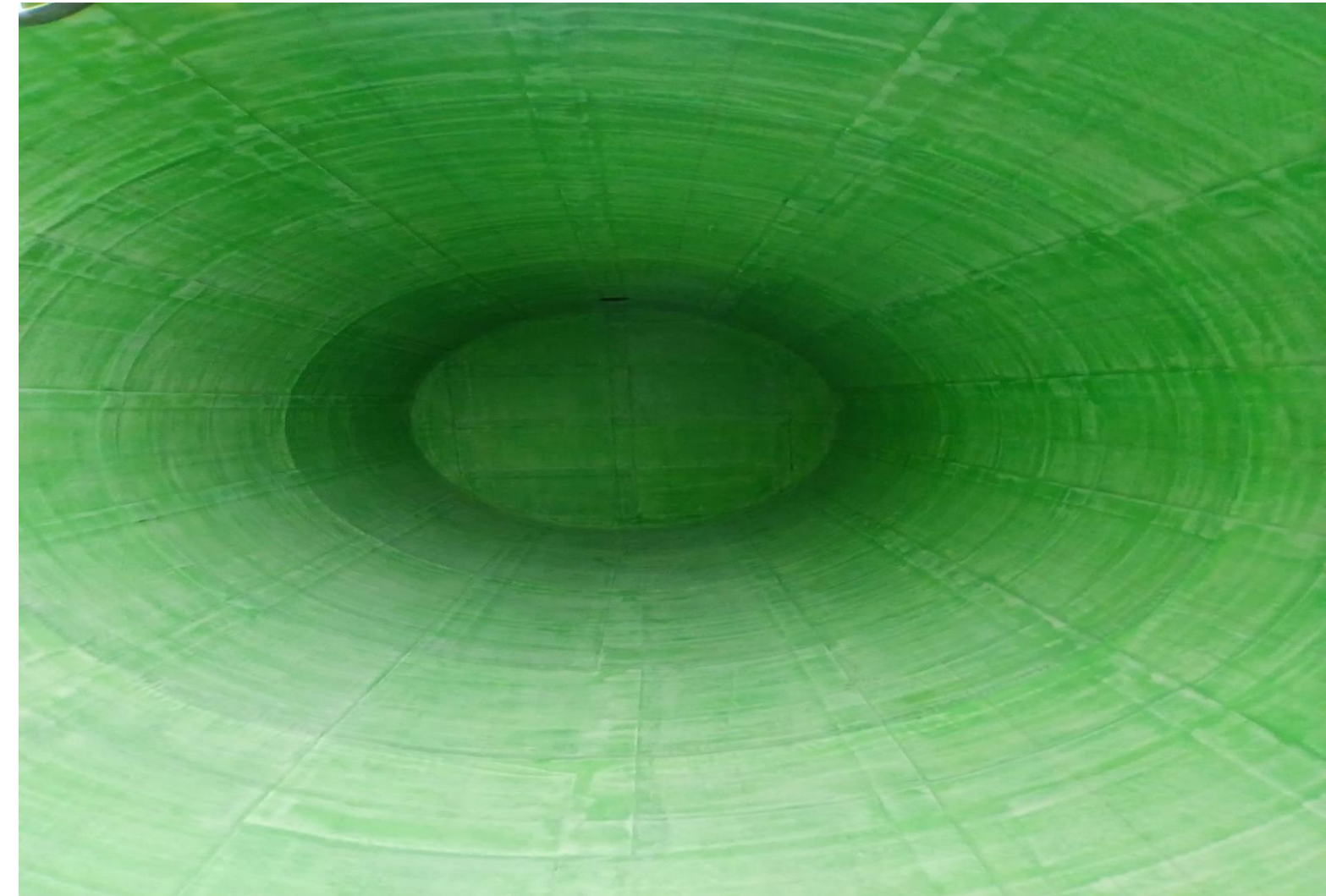
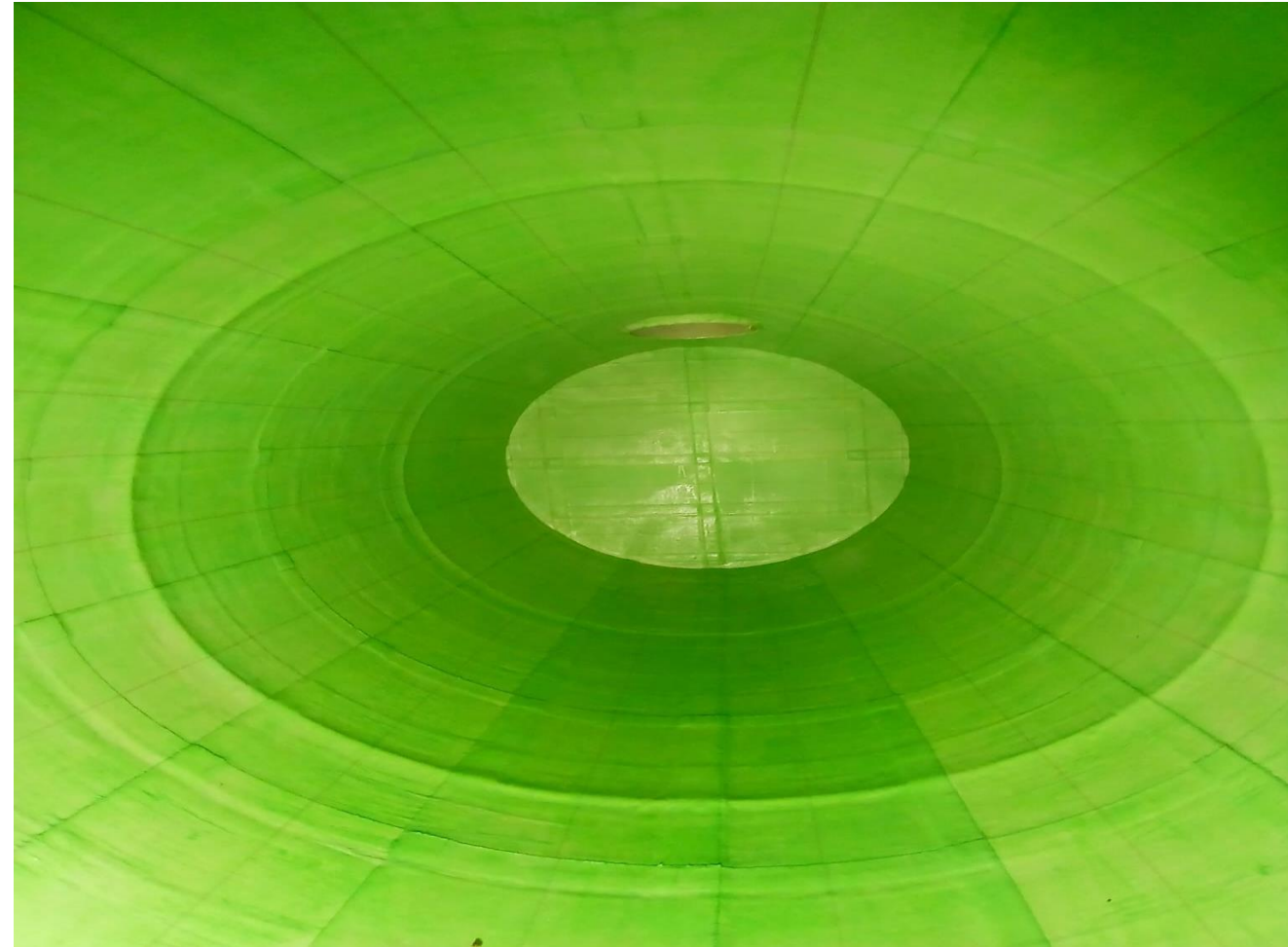
3D layer for leak monitoring, tubing installed.



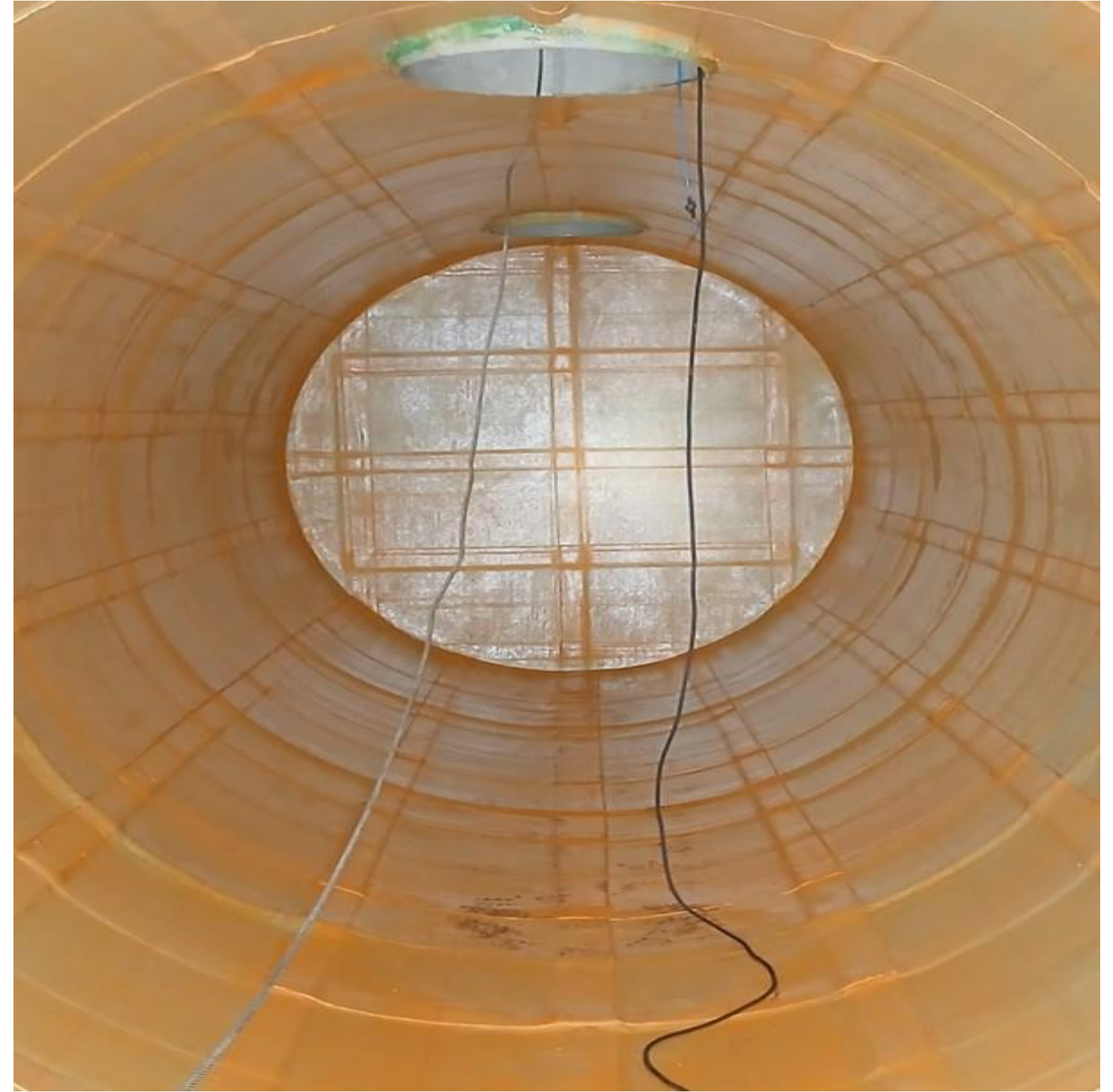
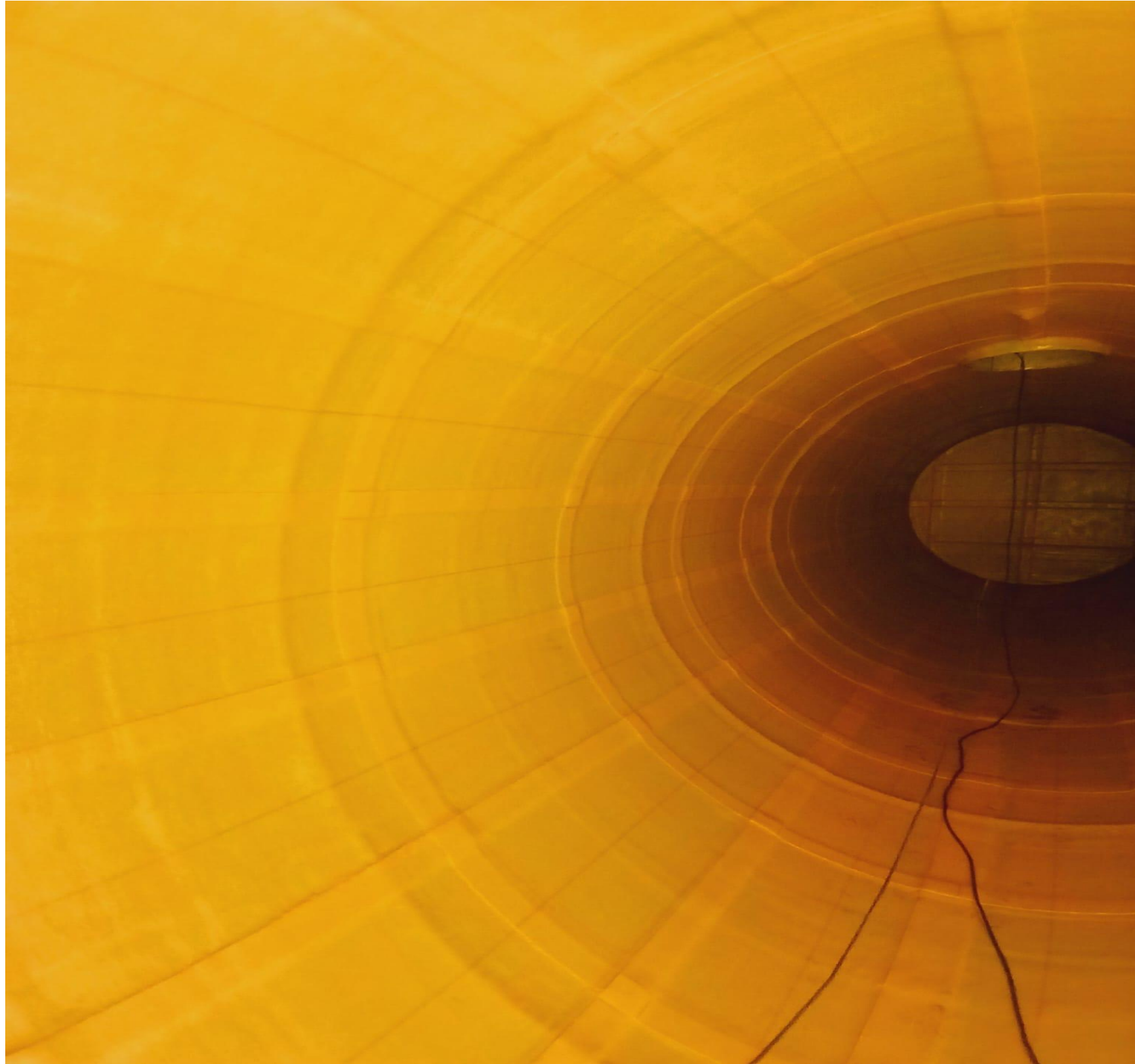
9. LAYER 3 – GREEN



Third layer installed. First pressure test of interstitial space.



10. LAYER 4 – ORANGE



12. TOP EQUIPMENT REPLACEMENT



Restore and replace tank top equipment.

BEFORE



13. ELECTRONIC MONITORING SYSTEM

Permanent pressure monitoring system installed.





OUR COMMITMENT TO QUALITY & SAFETY

1

**RIGOROUS PRESSURE
TESTING AFTER EVERY
LAYER**

2

**FINAL TESTING AT 30 PSI
ENSURES LEAK-PROOF
RELIABILITY**

3

**CONTINUOUS ELECTRONIC
MONITORING SYSTEM FOR
LONG-TERM SECURITY**





WHY DON WOOD INC.?

Established Legacy

Established in 1957, Don Wood Inc. has over 65 years of industry expertise

Proven Success

Proven track record of delivering fuel systems and tank solutions across the Southern USA.

Comprehensive Tank Management

Specializing in comprehensive tank management services, from installation to maintenance.

Regulatory Compliance Experts

Deep knowledge of environmental regulations ensures your facility stays compliant.



July 23, 2024

DON WOOD INC.

THE DON WOOD INC. DIFFERENCE



↘ **END-TO-END SERVICE**

Complete project management from planning and mobilization to final installation and ongoing monitoring

↘ **SAFETY FIRST APPROACH**

Adhering to the highest safety and compliance standards, ensuring your facility's continuous operation

↘ **CUTTING-EDGE TECHNOLOGY**

Utilizing the latest in tank safety technology with our permanent electronic monitoring systems

↘ **CUSTOMER-CENTRIC**

Customized solutions tailored to meet your facility's unique needs with excellent customer support.

Exclusive Partner for Rafibras: The only authorized installer of the Rafibras Double Wall System in the U.S.

DON WOOD INC.



THANK YOU

WWW.DONWOODINC.COM 407-293-0891



QUESTIONS? CONTACT US!

